



PASCHIM BANGA GRAMIN BANK
Regional Office, Howrah
58/1 ASHIM ROY SARANI (KANTAPUKUR 3rd BYE LANE)
P.O. KADAMTALA, P.S. BANTRA, HOWRAH, WB 711101

Tender Notice

Date: 11.09.2023

Sir/Madam,

Paschim Banga Gramin Bank, Regional Office Howrah invites application cum sealed quotations from authorized experience interior vendors for the **interior furniture work** as per schedule(B.O.Q) & layout (enclosed) of **Dumrajala Branch-new premises**. Intending suppliers are requested to submit the quotation in sealed envelope at R.O HOWRAH as per below mentioned notice.

SL.NO	DESCRIPTION - 1	DESCRIPTION - 2
1	NAME & LOCATION OF WORK	Interior Furniture Work At DUMRAJALA BRANCH-NEW PREMISES .PASCHIM BANGA GRAMIN BANK, DUMRAJALA BRANCH. DUMRAJALA HOWRAH 711104.
2	TIME ALLOWED FOR COMPLETION	8 Days Including Sundays & Holidays.
3	QUERIES	ON OR BEFORE 19/09/2023 IN BETWEEN 3.00PM TO 4.00 PM ON EACH DAY.CONTACT PERSON :MR.ARNAB MUKHERJEE,OMM-II, AGA ; MOB:9804923106.E-MAIL:"Howrahro.Acct" <Howrahro.Acct@Mail.Pbgb.Co.In>;
4	LAST DATE & TIME OF SUBMISSION OF TENDER DOCUMENT	3 PM ON OR BEFORE - 19/09/2023
5	DATE & TIME OF OPENING OF SEALED BID	3.30 PM ON 19/09/2023
6	ADDRESS OF SUBMISSION OF TENDER DOCUMENT	SENIOR MANAGER (AGA) PASCHIM BANGA GRAMIN BANK REGIONAL OFFICE, HOWRAH. 58/1 ASHIM ROY SARANI (KANTAPUKUR 3 rd BYE LANE) P.O. KADAMTALA, P.S. BANTRA, HOWRAH, WB 711101
7	DEFECTIVE LIABILITY REPORT	12 MONTHS FROM THE DATE OF VIRTUAL COMPLETION AT WORK.
8	VALIDITY OF OFFER	3 MONTHS FROM THE DATE OF OPENING OF PRICE BID .
9	LIQUATED DAMAGES	0.5% PER WEEK SUBJECT TO A MAXIMUM OF 5% OF CONTRACT VALUE.
10	APPROXIMATE ESTIMATED COST OF THE PROJECT	QUOTED RATE + GST AS APPLICABLE
11	DOCUMENTS REQUIRED TO BE SUBMITTED WITH QUOTATION AT PASCHIM BANGA GRAMIN BANK REGIONAL OFFICE HOWRAH	ENVELOP-1(TECHNICAL BID) 1.SCANNED COPY OF VALID TRADE LICENCE & P-TAX. 2.SCANNED COPY OF PAN. 3.SCANNED COPY OF ITR FOR THE FINANCIAL YEAR 2019-20 ,2020-21 & 2021-22 & 2022-23 4.GST REGISTRATION NO:- RETURN OF (GSTR-1/GSTR-3) FOR LAST YEAR 2022-23. ENVELOP - 2(COMMERCIAL BID/PRICE BID) ENVELOP - 1 & ENVELOP - 2 -COMBINED IN BIG ENVELOP.
12	SECURITY DEPOSIT	5% OF THE ESTIMATED RATE
13	EARNEST MONEY DEPOSIT (EMD)	2% OF THE ESTIMATED VALUE TO BE DEPOSITED IN THE FORM OF DEMAND DRAFT AT THE OFFICE OF PBGB (HWH) IN FAVOR OF PASCHIM BANGA GRAMIN BANK PAYABLE AT HOWRAH IN SEALED ENVELOPE

PBGB-ROH Has The Right To Accept /Reject any/All Quotation(S) Without Assigning Any Reason.


REGIONAL MANAGER

PASCHIM BANGA GRAMIN BANK, REGIONAL OFFICE HOWRA
58/1 ASHIM ROY SARANI (KANTAPUKUR 3rd BYE LANE)
P.O. KADAMTALA, P.S. BANTRA, HOWRAH, WB 711101

PASCHIM BANGA GRAMIN BANK

BOQ for Dumurjala Branch furnishing work under Howrah Regional Office

SL NO	PARTICULARS	QTY	RATE	AMOUNT
1	Supplying and providing new counter for cash as per existing design with B.W.R grade Ply/B Board, front portion covered by Sunmica 1 mm thick etc. counter front height 45", public transaction top 16" width with Sunmica and inside working top 36" width sunmica having Computer Key Board tray (P.V.C) EBCO make, and Cabinet size -15" x 24" deep and height 30" having two drawers (4"x18") unit upper one is inside partition and lower one is as it is opened and Cupboard with Sunmica on front Counter inside portion with locking arrangement including Polishing complete.	13'-6' Rft		
2	Cash Cage Partition			
a	Front portion of the Cash Cage will be covered by 12 mm thick glass of size- 4'-6' x 3'-3' in each Cash Cage and there will be cutting out of 6" x 4" half round for transaction of the counter and 2" Split for conversation and upper portion will be blocked by 12 mm thick glass in front.	45 Sft		
b	Side and back partition made out of 2" x 2" & 2" x 1" woden frame work made of Gammar/ Kapoor/ SAL etc. height upto 7' ft out of that 45" inches height will be covered by 6 mm. BWR Ply on both faces with Sunmica on both faces and upper portion will be covered by 6 mm Glass and there will be internal transaction hole of 2" x 10" length and glasses are fixing with C.P Teak wooden Bead with C.C Enclosure including Polish complete.	196Sft		

For PASCHIM BANGA GRAMIN BANK


Regional Manager
Regional Office (Howrah)

3	<p>Flush Door- Supplying and Fixing Flush Door made of 30mm thick with both side Laminate half glass 6 mm & 12mm for C.C enclosure in the upper portion of the Door and Sunmica upto 45" height in the lower portion of the door with fixing and fitting all complete including Door Closure, Cylindrical Lock and Door Stopper etc. with Polish complete.</p> <p>a. For Cash Cage Door - 6'-9" x 2'-6" : 3 Nos. b. For C.C Enclosure Door - 6'-9" x 3' : 1No. N.B : C.C Enclosure partition 12 mm Glass & Door upper will be 12 mm glass and lower Sunmica upto 45" height.</p>	71 Sft		
4	<p>Customer's Bench-cum-chair - 3 Pcs in 1 Set, Size - 6' x 1' -6" with Sheet & back perforated with Handles (Steel finish).</p>	3 Nos.		
5	<p>Strong Room Partition - made out of Post 2' x 2" and 2" x 1" Wooden Runner and covering with 3.5mm thick ply on both faces having a Door of 7' x 3'. All are Teak finished with Polish complete and Door will be Locked properly with Door Bolt etc.</p>	51Sft		
6	<p>Pass Book Printer Table: Supplying and providing Table, Size- 4' x 2 x 2' - 6" as per Bank's specifications with 1 Cabinet and Drawer Unit, Drawer size - 15" x 18" deep, 4" inch hright all sides and top will be covered by Sunmica of 1 mm. thick cover 3/4" Block Board with Polish complete.</p>	1 No.		
7	<p>Manager's Low Height Partition: Supplying and Providing Manager's Low Height Partition with 2" x 2" & 2" x 1" frame work mafde of Gammer Kapoor, Sal Wood, height - 45" covering with 6 mm Ply with both faces with Sunmica and there will be lower skirting 4" x 1/2" on both sides and upper hand railing will be of 3" x 1 1/2" wood sides moulded and there will be low height door for closing the Manager's Chamber when necessary with Polishing complete.</p>	72Sft		

For PASCHIM BANGA GRAMIN BANK


Regional Manager
Regional Office (Howrah)

8	Table Repairing - Table major repairing with Drawer's Locks, Kabza etc. with Polish Complete 1. Size- 5' x 3' x 2'-6" Size - 4' x 2' x 2'-6"	2 Nos.		
9	Wooden Chair Repairing - With Seat and Back by ½" Ply both seat and back with Sunmica finish and Polish complete including Rubber Shoes on the legs end.	8 Nos.		
10	Supplying and providing new Cupboard Cabinet, Size - 6'-6" Length x 2' Width x 8' Height made out of 19mm Block Board BWR Grade and there will be 2 Parts in Height (4' + 4') having 2 shelves 3 Compartments in 4' height and another 2 Shelves and 3 Compartments in 4' height and back 6 mm Ply covering and there will be 19mm thick Block Board front Palla on both upper and lower Row with having Sunmica in front and side with Godrej Lock and Conceal Hings, Tar Bolt, Chitkani etc. complete with Polishing.	52 Sft		
11	Supplying Manager's Chair (Throne type) with Revolving - 1 No. (Steel) Manager's Visitor Chair - 2 Nos. Make - Feather Lite / Steel Co./ Raj & Raj (steel)	1 No. 2 Nos.		

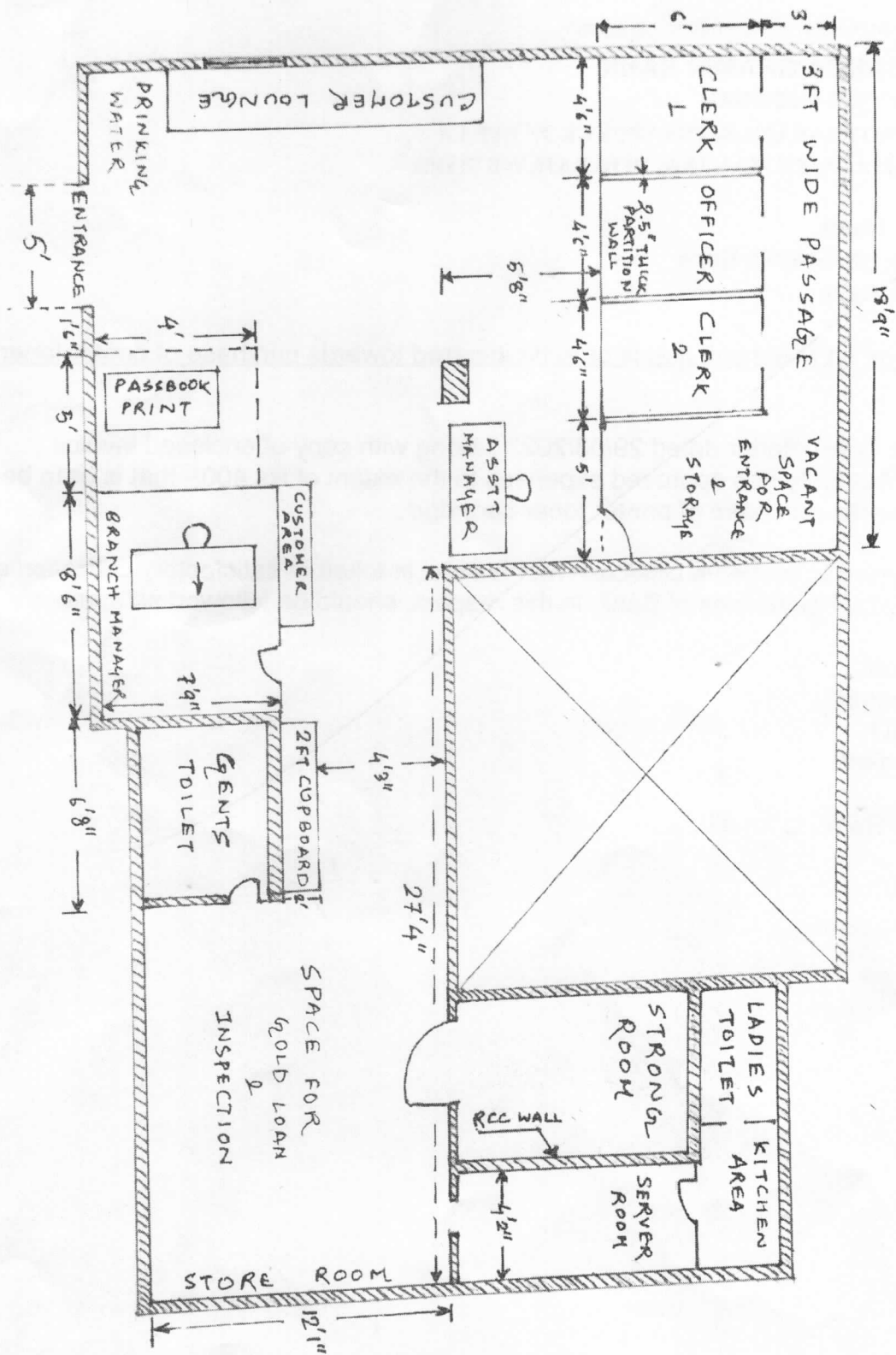
N.B:

- Wood : Gammar/ Kapoor/ SAL/ Mahogany
 B. Board & Ply : Globe/ Raffel/ Shatabdi/ Crown/ Mayur
 Lock : Godrej
 Sunmica : 1 mm thick of AICA/ Green
 Polish : Sprit, Galla etc.
 Glass : Modi Float / Saint Gobin
 Teak Ply : Green

For PASCHIM BANGA GRAMIN BANK

 Regional Manager
 Regional Office (Howrah)

DUMURJALA BRANCH



For PASCHIM BANGA GRAMIN BANK

Regional Manager
Regional Office (Howrah)

